



OWNER'S TECHNICAL MANUAL

P50

Petrol Driven 2" Diesel & Water Transfer Engine Pump

March 2021

Description

The Alemlube P50 petrol driven 2" transfer engine pump is specifically designed and manufactured for the transfer of diesel and water. Mounted in a robust tubular steel roll frame with rubber feet the P50 is completely portable, suits many industrial, workshop, agricultural, municipal, marine services and on site applications including construction site dewatering and is capable of transferring up to 600 litres of diesel fuel or water per minute.

Driven by a powerful OHV 4 stroke air cooled petrol engine this lightweight die-cast aluminium pump with 2" diameter inlet & outlet ports operates efficiently with a maximum suction head of 8 metres and a maximum lift head of 28 metres.

Always ready to perform tank filling, diesel or water transfer the P50 has a 3.6L fuel tank capacity with a manual starting system.

Specifications

Uses	Diesel and water transfer
Engine Type	OHV 4 stroke, Air Cooled
Maximum Flow Rate	600 L/min

IMPORTANT

Please make certain that persons who are to use this equipment thoroughly read and understand these instructions and any additional instructions provided prior to operation.

NOTE

No refund or exchange once petrol is placed into the fuel tank. Warranty registration must be complete within 30 days of purchase with proof of purchase.



NSW/ACT
TEL: (02) 9677 1555
FAX: (02) 9675 1155

QLD/PNG
TEL: (07) 3204 9166
FAX: (07) 3204 1224

VIC/TAS
TEL: (03) 8787 8288
FAX: (03) 8787 8266

WA
TEL: (08) 9302 4199
FAX: (08) 9303 2095

SA/NT
TEL: (08) 8241 7111
FAX: (08) 8241 7011

NZ
TEL: (09) 447 1007
FAX: (09) 447 1008



OWNER'S TECHNICAL MANUAL

P50

Petrol Driven 2" Diesel & Water Transfer Engine Pump

TABLE OF CONTENTS

1. INSTALLATION AND OPERATION	3
1.1. INSTALLATION	3
1.2. SAFE OPERATION	3
2. BEFORE STARTING	4
3. STARTING THE ENGINE	5
4. STOPPING THE ENGINE	6
5. TROUBLE SHOOTING	7
6. MAINTENANCE	8-9
7. PROHIBITED OPERATION MESSAGE	10
8. STORAGE AND TRANSPORTATION	10

NSW/ACT

TEL: (02) 9677 1555
FAX: (02) 9675 1155

QLD/PNG

TEL: (07) 3204 9166
FAX: (07) 3204 1224

VIC/TAS

TEL: (03) 8787 8288
FAX: (03) 8787 8266

WA

TEL: (08) 9302 4199
FAX: (08) 9303 2095

SA/NT

TEL: (08) 8241 7111
FAX: (08) 8241 7011

NZ

TEL: (09) 447 1007
FAX: (09) 447 1008



OWNER'S TECHNICAL MANUAL

P50

Petrol Driven 2" Diesel & Water Transfer Engine Pump

INSTALLATION & OPERATION

1. Installation

Install the pump on an even surface in a well ventilated place

Do not install more than 7m above stored diesel or water supply

Install a filter in the inlet pipe

1.1. Safe Operation

Do not operate in a confined or badly ventilated place or near to flammable liquids

Filling fuel, stop engine

Filling fuel, do not smoke

Filling fuel, do not splash fuel

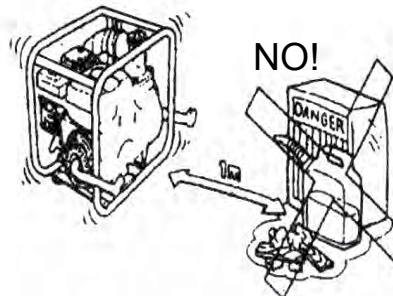
SAFETY

CAUTION



NO FOR USE INDOORS

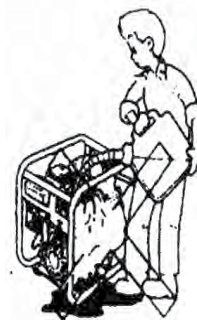
KEEP AWAY FROM FLAMMABLE MATERIAL



STOP ENGINE
WHEN REFUELING



NO SMOKING!



NO NOT SPILL
WHEN REFUELLING

NSW/ACT

TEL: (02) 9677 1555

FAX: (02) 9675 1155

QLD/PNG

TEL: (07) 3204 9166

FAX: (07) 3204 1224

VIC/TAS

TEL: (03) 8787 8288

FAX: (03) 8787 8266

WA

TEL: (08) 9302 4199

FAX: (08) 9303 2095

SA/NT

TEL: (08) 8241 7111

FAX: (08) 8241 7011

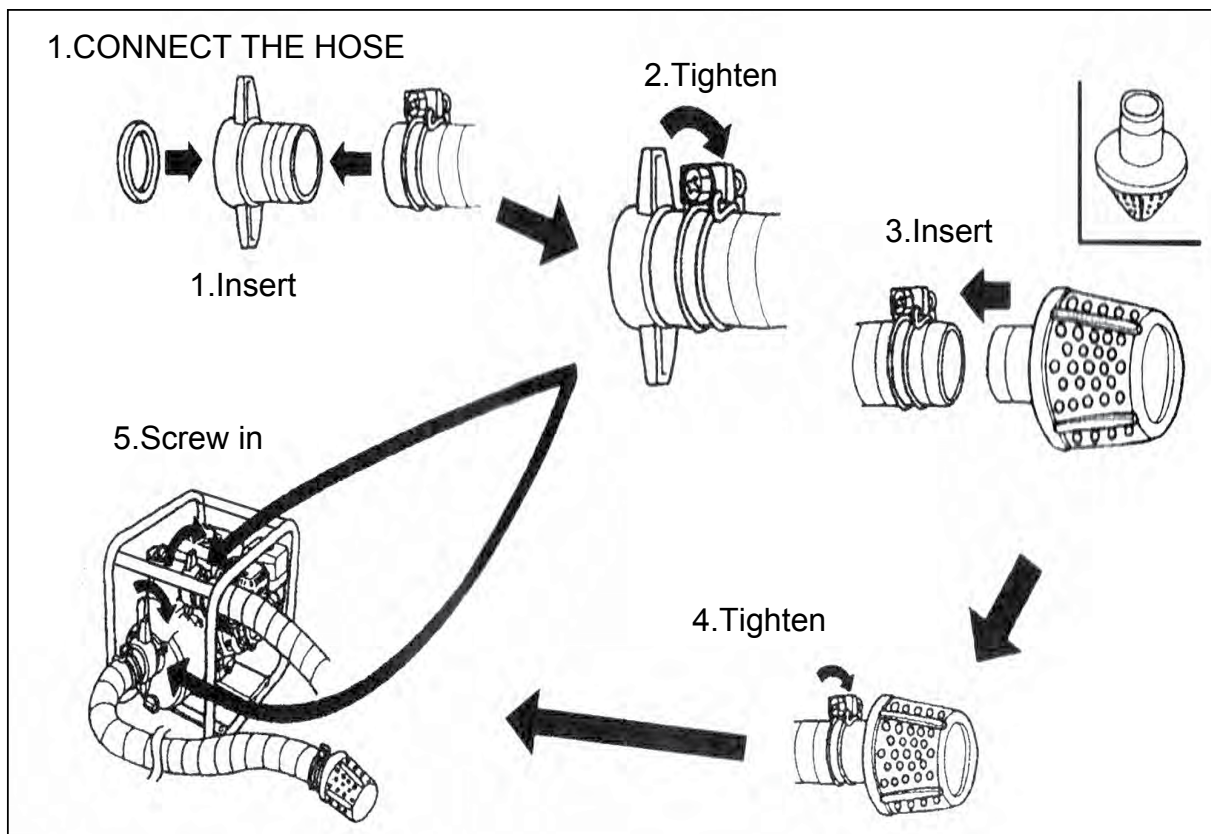
NZ

TEL: (09) 447 1007

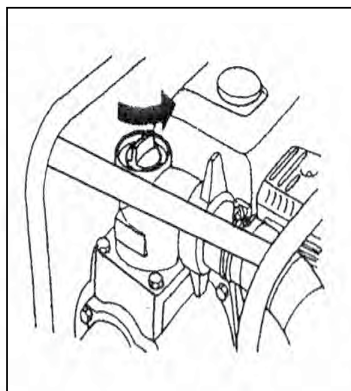
FAX: (09) 447 1008

BEFORE STARTING

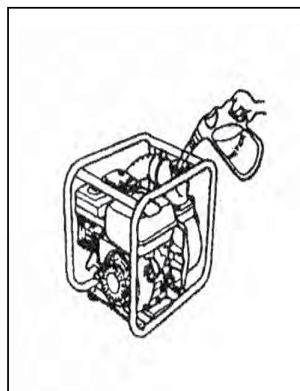
2.



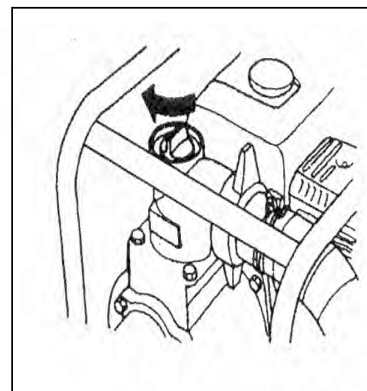
2.FILL PRIMING DIESEL OR WATER



1.Remove cap



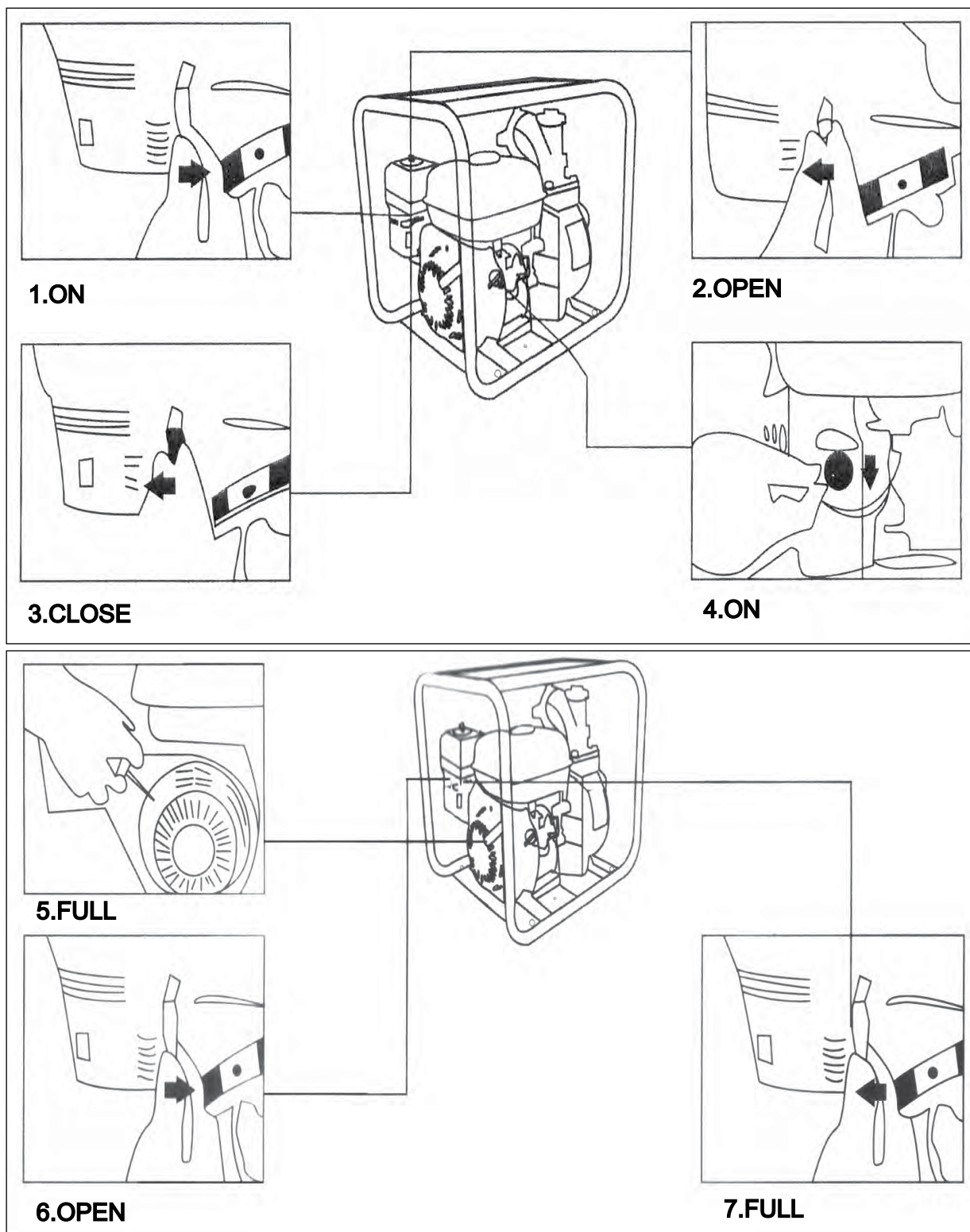
2. Fill with diesel or water



3. Replace cap

STARTING THE ENGINE

3.





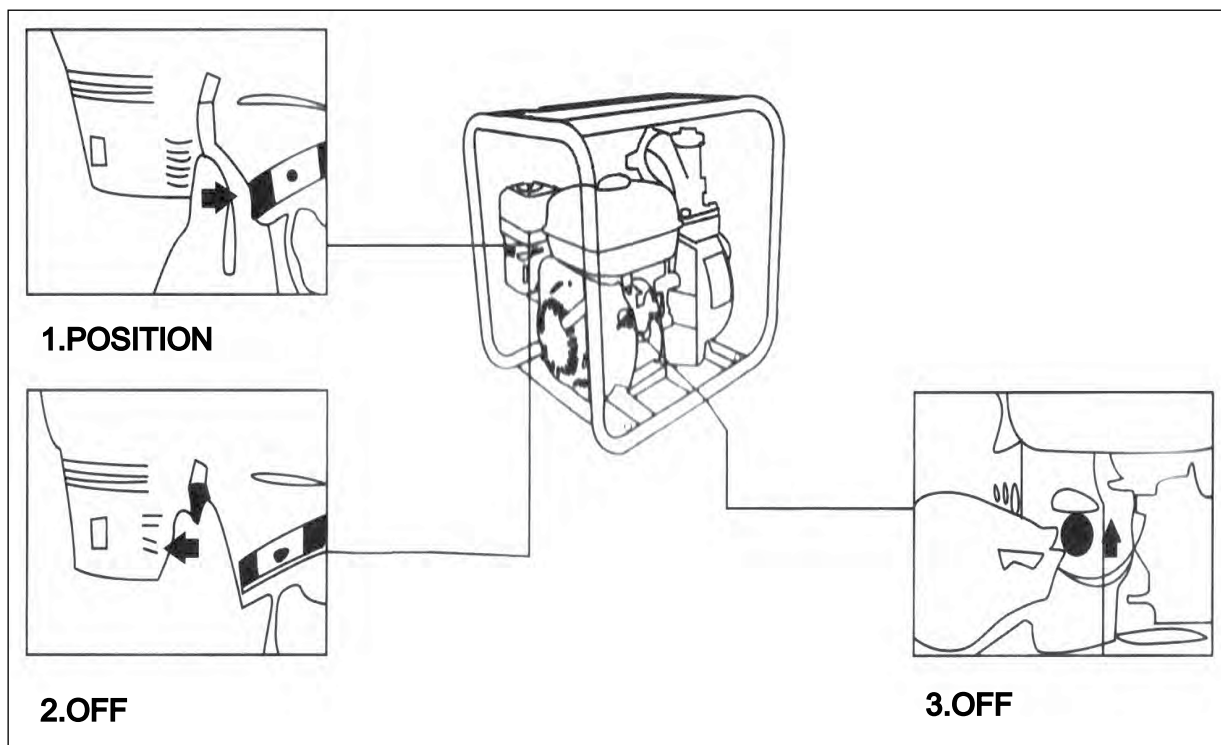
OWNER'S TECHNICAL MANUAL

P50

Petrol Driven 2"
Diesel & Water Transfer Engine Pump

STOPPING THE ENGINE

4.



NSW/ACT
TEL: (02) 9677 1555
FAX: (02) 9675 1155

QLD/PNG
TEL: (07) 3204 9166
FAX: (07) 3204 1224

VIC/TAS
TEL: (03) 8787 8288
FAX: (03) 8787 8266

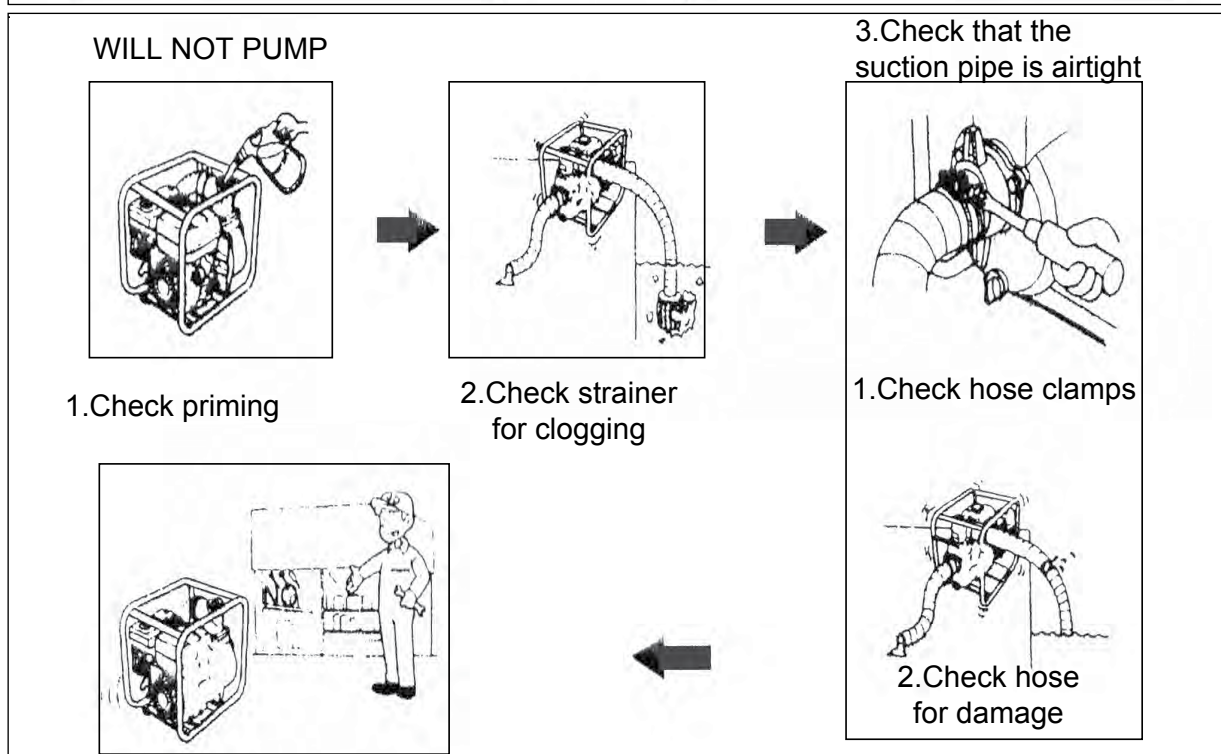
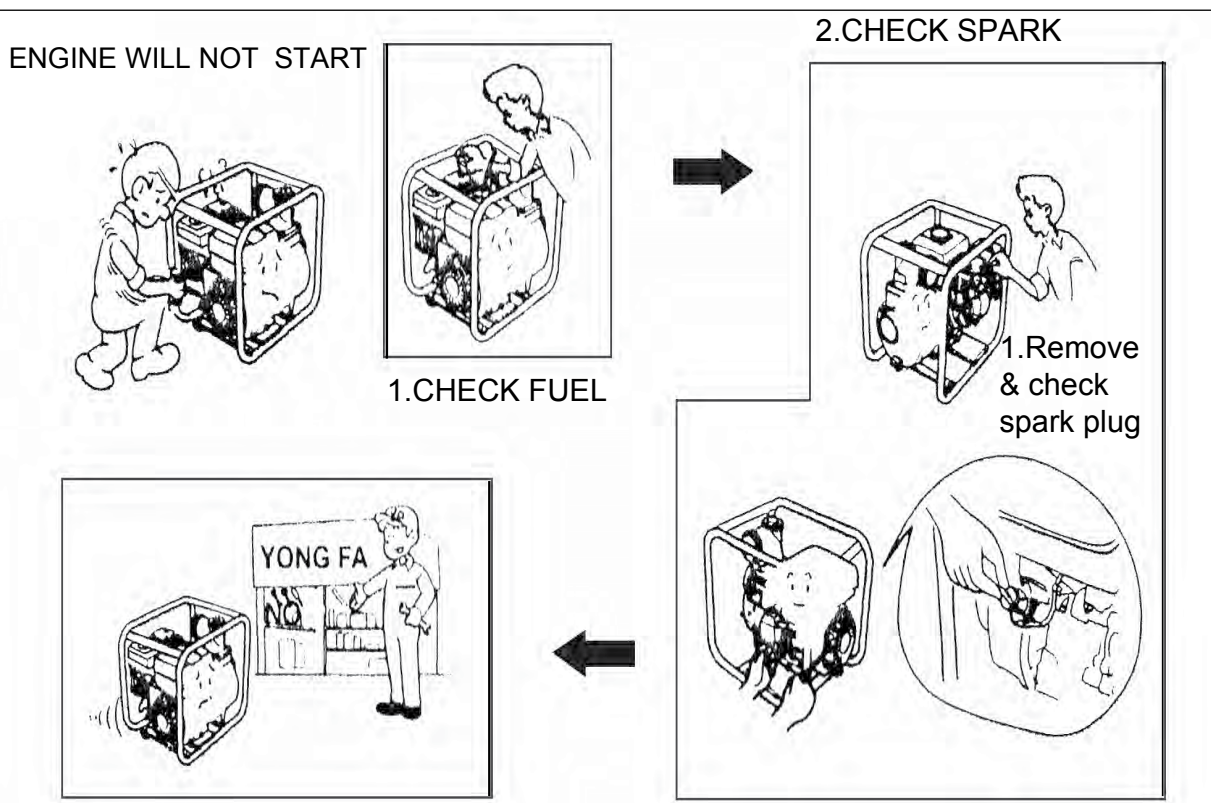
WA
TEL: (08) 9302 4199
FAX: (08) 9303 2095

SA/NT
TEL: (08) 8241 7111
FAX: (08) 8241 7011

NZ
TEL: (09) 447 1007
FAX: (09) 447 1008

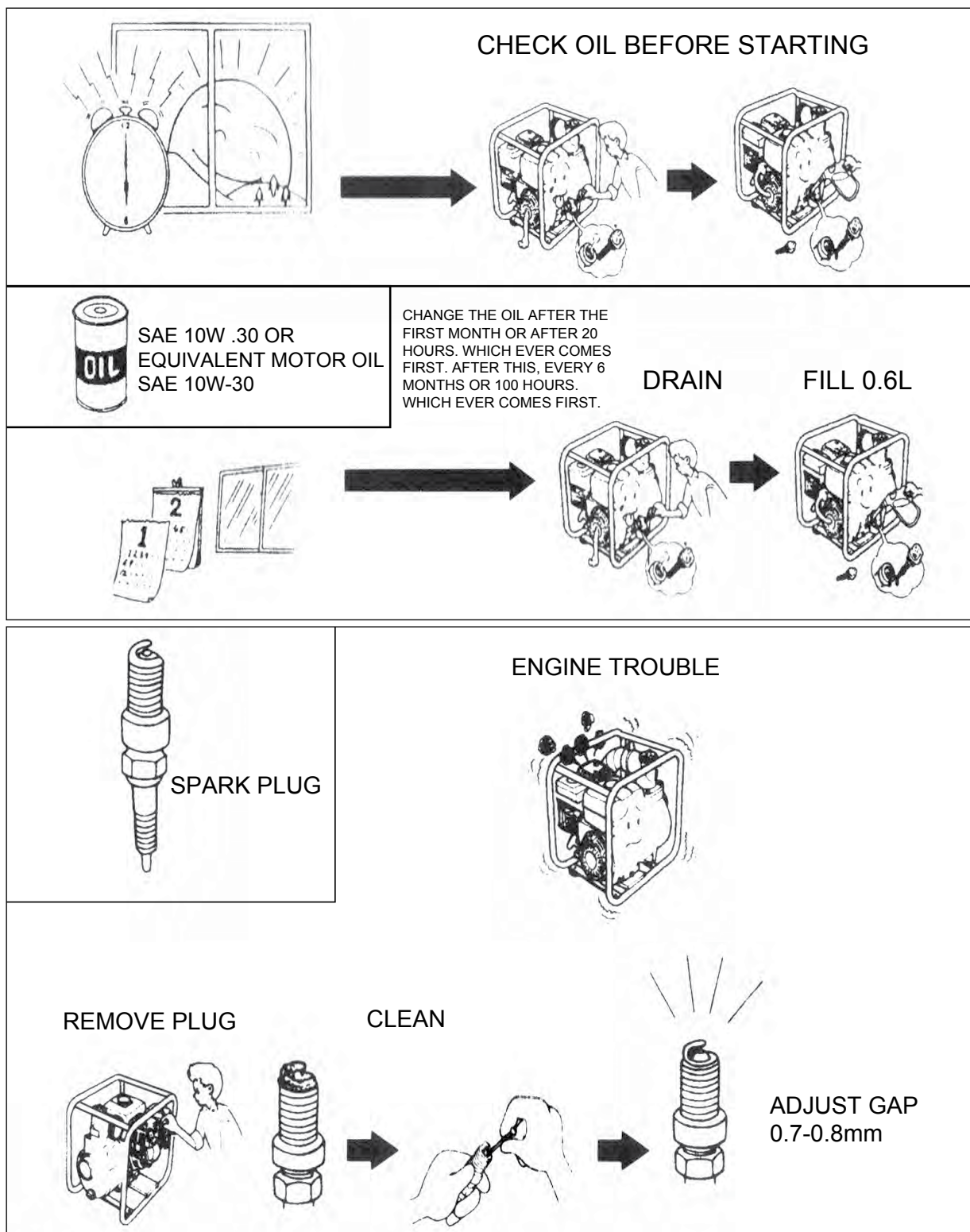
TROUBLE SHOOTING

5.



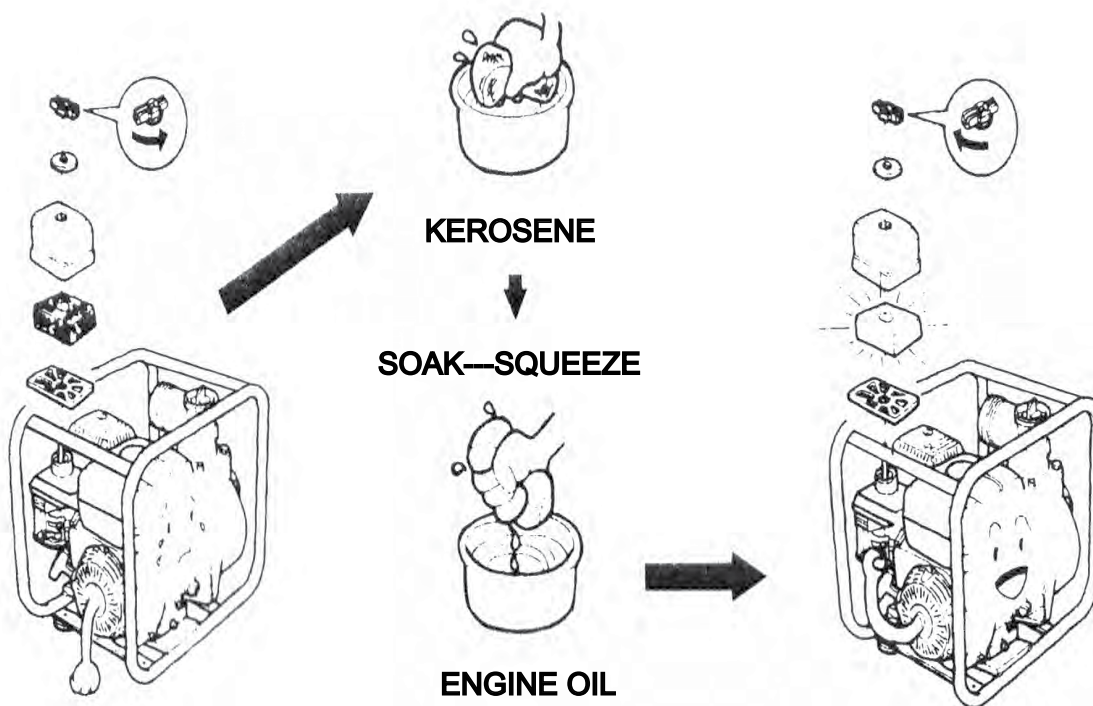
MAINTENANCE

6.



AIR CLEANER TROUBLE

WASH—DRY



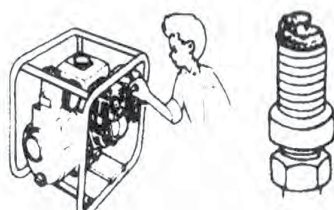
SPARK PLUG

ENGINE TROUBLE



REMOVE PLUG

CLEAN



ADJUST GAP
0.7-0.8mm



OWNER'S TECHNICAL MANUAL

P50

Petrol Driven 2"
Diesel & Water Transfer Engine Pump

PROHIBITED OPERATING MESSAGE

7.

- 7.1 Before adding oil, stop operating the engine
- 7.2 Suitable only for the transfer of clean diesel fuel or clean water
- 7.3 Do not transfer contaminated fluid
- 7.4 Not to be used for draining mud
- 7.5 Atmospheric temperature can't be less than 0°C or more than 40°C
- 7.6 Engine should be stopped immediately when the temperature is beyond this temperature range
- 7.7 Warranty does not cover damage caused by faulty operation

STORAGE

8.

- 8.1 Store in clean, dry place
- 8.2 Drain fuel and oil before storing the pump

NSW/ACT
TEL: (02) 9677 1555
FAX: (02) 9675 1155

QLD/PNG
TEL: (07) 3204 9166
FAX: (07) 3204 1224

VIC/TAS
TEL: (03) 8787 8288
FAX: (03) 8787 8266

WA
TEL: (08) 9302 4199
FAX: (08) 9303 2095

SA/NT
TEL: (08) 8241 7111
FAX: (08) 8241 7011

NZ
TEL: (09) 447 1007
FAX: (09) 447 1008



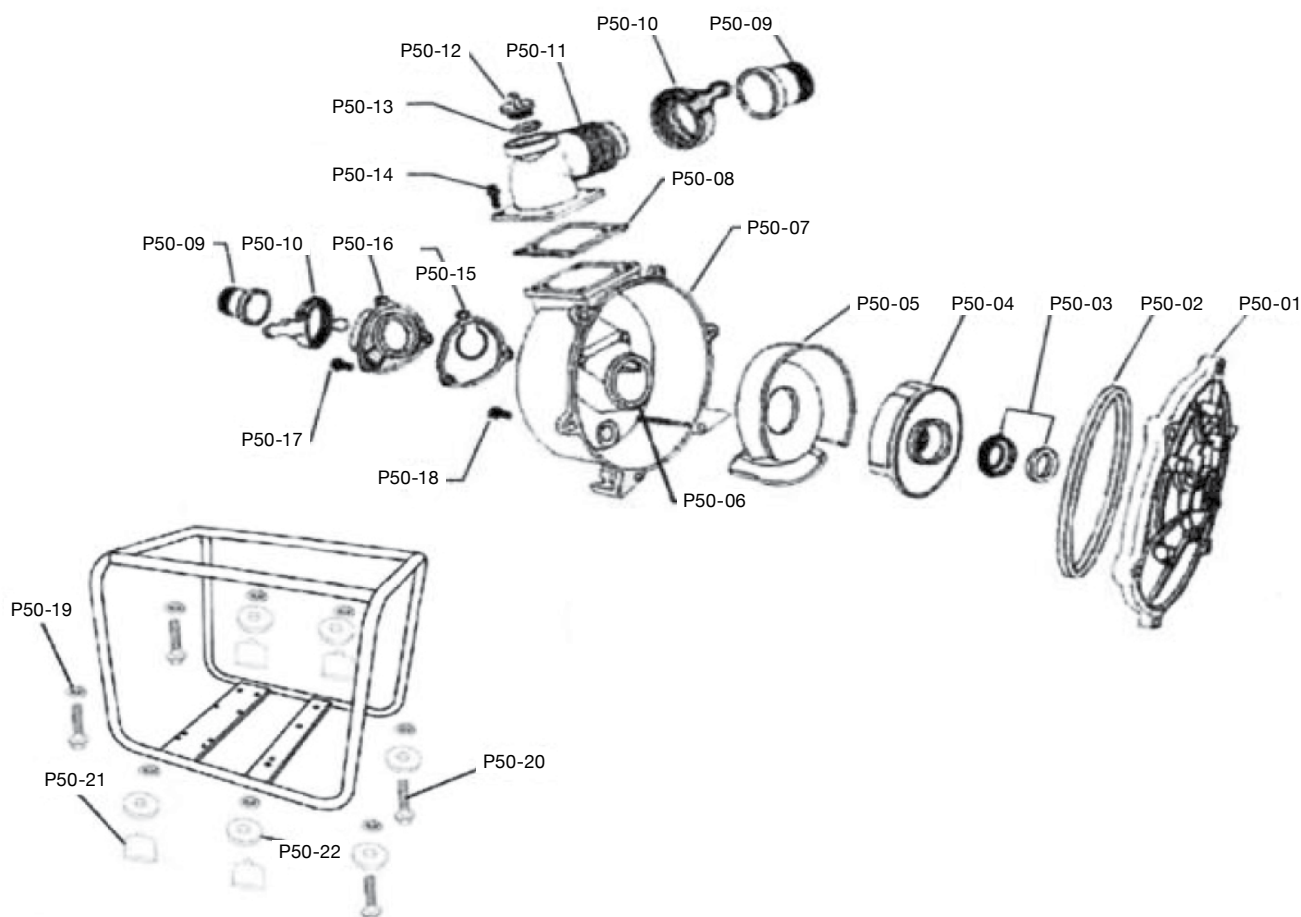
OWNER'S TECHNICAL MANUAL

P50

Petrol Driven 2" Diesel & Water Transfer Engine Pump

Ordering Spare Parts

Parts List – Part No. P40



Part Number	Description
P50-01	Pump Cover
P50-02	Cover Gasket
P50-03	Mechanical Seal
P50-04	Impeller
P50-05	Volute Casing
P50-06	Volute Casing Gasket
P50-07	Pump Hosing

Part Number	Description
P50-08	Discharge Flange
P50-09	Pip Connector
P50-10	Nut Connector
P50-11	Discharge Flange
P50-12	Priming Plug
P50-13	ORing Plug
P50-14	Bolt M8*20

Part Number	Description
P50-15	Inlet Valve Gasket
P50-16	Inlet Flange
P50-17	Bolt M8*20
P50-18	Bolt M8*25
P50-19	Gasket
P50-20	Nut
P50-21	Rubber Feet
P50-22	Feet Gasket

NSW/ACT
TEL: (02) 9677 1555
FAX: (02) 9675 1155

QLD/PNG
TEL: (07) 3204 9166
FAX: (07) 3204 1224

VIC/TAS
TEL: (03) 8787 8288
FAX: (03) 8787 8266

WA
TEL: (08) 9302 4199
FAX: (08) 9303 2095

SA/NT
TEL: (08) 8241 7111
FAX: (08) 8241 7011

NZ
TEL: (09) 447 1007
FAX: (09) 447 1008