

Description

The EL Series O30030 is the ideal oil transfer kit for dispensing oil with a maximum viscosity of SAE130.

Representing excellent value for money, the Alemlube EL Series O30030 gives you the opportunity to upgrade from standard hand operated oil drum pumps to a pneumatic solution.

Delivering up to 20L/min with a 3:1 ratio pump, the O30030 is suitable for use with 205L oil drums to perform intermittent or seasonal work.

The oil control valve with ergonomic grip is easy to operate and features a lock on device for your convenience.

Smart design with fewer working parts effectively facilitates a lower cost of ownership.

Manufactured with efficiency and reliability in mind, the O30030 3:1 Air-operated Oil Pump is well designed, affordable and is supported by readily available spare parts.

Technical Details

Item No.	O30030
Ratio	3:1
Air Inlet Pressure	30-150psi (2-10bar)
Max Fluid Pressure	450psi (30bar)
Air Consumption	3.6cfm @ 150psi
Max Free Flow Rate	20L/min
Tube Diameter	42mm
Suction Tube Length	940mm
Air Inlet Connection	1/4" quick plug
Oil Delivery Connection	Male 1/2"
Maximum Viscosity Oil Delivered	SAE 130
Temperature Oil Delivered	-10~50°C
Noise Level	82 dB



Safety Warning and Precautions

WARNING: The warnings, cautions, and instructions discussed in this instruction manual cannot cover all possible conditions or situations that could occur. It must be understood by the operator that common sense and caution are factors that cannot be built into this product, but must be supplied by the operator.

1. Keep the work area clean and dry. Damp or wet work areas can result in injury.
2. Keep children away from work area. Do not allow children to handle this product.
3. Use the right tool for the job. Do not attempt to force small equipment to do the work of larger industrial equipment. There are certain applications for which this equipment was designed. It will do the job better and more safely at the capacity for which it was intended. Do not modify this equipment, and do not use this equipment for a purpose for which it was not intended.
4. Check for damaged parts. Before using this product, carefully check that it will operate properly and perform its intended function. Check for damaged parts and any other conditions that may affect the operation of this product. Replace damaged or worn parts immediately.
5. Do not overreach. Keep proper footing and balance at all times to prevent tripping, falling, back injury, etc.
6. DO NOT use the equipment when tired or under the influence of drugs, alcohol, or medication. A moment of inattention while operating this equipment may result in serious personal injury.

Product Specific Safety Precautions

When the pump is connected to the compressed air supply:

1. The compressed air must be filtered to avoid dust and moisture into pump.
2. The maximum compressed air pressure must not exceed 1.0Mpa/150psi.
3. To deliver oil, squeeze the lever on the control valve; delivery stops when the lever is released but the whole system remains under pressure.
4. Position the control valve so that the circuit can't open accidentally. Otherwise oil could leak onto the ground.
5. Never point the pistol at people or object.
6. Always cut off the air supply after use so that oil can't leak out in case one of the pump's components should break.
7. Use only original spare parts in case the pump has to be repaired or its components have to be replaced.
8. Empty all the oil from the pump in case it has to be disposed of.
9. When not in use, turn off compressed air to stop the pump.
10. Do not use the pump near open flames. Do not smoke during this operation.
11. Wear oil-proof gloves.
12. Do not throw the oil away. Used oil has to be disposed of according to national environmental regulations.
13. The pump can be used only to deliver lubricants, used oil or antifreeze liquids. Do not use the pump for any other substance.

Read the following precautions and instructions before you begin assembly or using.

Failure to comply with these instructions could result in personal injury or property damage.

Keep these instructions in a convenient location for future reference.

Important Note

The guarantee will be void if the pump has been altered in any way.

Trouble Shooting

Problem	Possible Causes	Solutions
The pump doesn't work	1. Insufficient air 2. Air obstruction	1. Increase air pressure 2. Clear air passage 3. Change voltage
	1. The intake valve is closed 2. The intake valve is blocked	1. Open the intake valve 2. Clean the intake valve
	A blockage in a hose, valve, or other device	Release pressure & clean
	Damage to Screw (5) or plate (8)	Assess damage, repair or replace Screw (5) or plate (8)
	Insufficient oil supply	Replace oil drums to ensure adequate oil supply
Leak of pneumatic device	Damage to Piston (7) or gasket (9) or spring (10)	Assess damage, repair or replace Piston (7) or gasket (9) or spring (10)
The pump is unstable	Insufficient oil supply	Replace oil drums to ensure adequate oil supply
	O-Ring (3) Seal (16) (26) (28) (34) damage	Change Corresponding O-Ring or seal
	Tube (36) damage	Change tube (36)
The pump can work, but the output flow is low	Piston (7) wear	Change piston (7)
	O-Ring (3) Seal (16) (26) (28) (34) damage	O-Ring (3) Seal (16) (26) (28) (34) damage
	A blockage in a hose, valve	Release pressure & clean components
Oil leaks through the air exhaust	Silencer is dirty or damage	Substitute damaged elements

If the pump has anything wrong, please contact Alemlube. We do not recommend that the customer repairs the pump themselves.

Storage & Maintenance

Pumps are delivered in appropriate carton boxes. Packaging material should be properly disposed.

Handling and storage of the new pump does not require any special procedures.

However after the pump has been used, empty the used oil in the suction tube into an appropriate container. This is done by overturning the pump.

The dust in compressed air can slow down and even block the motor cylinder.

The following steps may prevent this from happening:

1. Let in 50 gram of Vaseline oil or other lubricator from the air inlet hole weekly, operate the pump for several minutes after having been lubricated.
2. Turn on the pump for several minutes until moving parts are fully lubricated.
3. You may repeat the above operation if necessary.
4. The above steps should be carried out on a weekly basis.

For the pumps that are attached with compressed air treatment equipment, please empty the water retained in the reservoir of the filter-purger frequently.

For the pumps that are attached with a lubricator, please pay close attention to the lubricator's oil level and refill with SAE 20, SAE 30 or antifreeze oil for extreme conditions when necessary.

NOTE: The user should perform only routine maintenance operations (such as filters, silencers, cleaning...) with the pump in order not to damage it or compromise its safety. Contact Alemlube when the pump needs further maintenance.

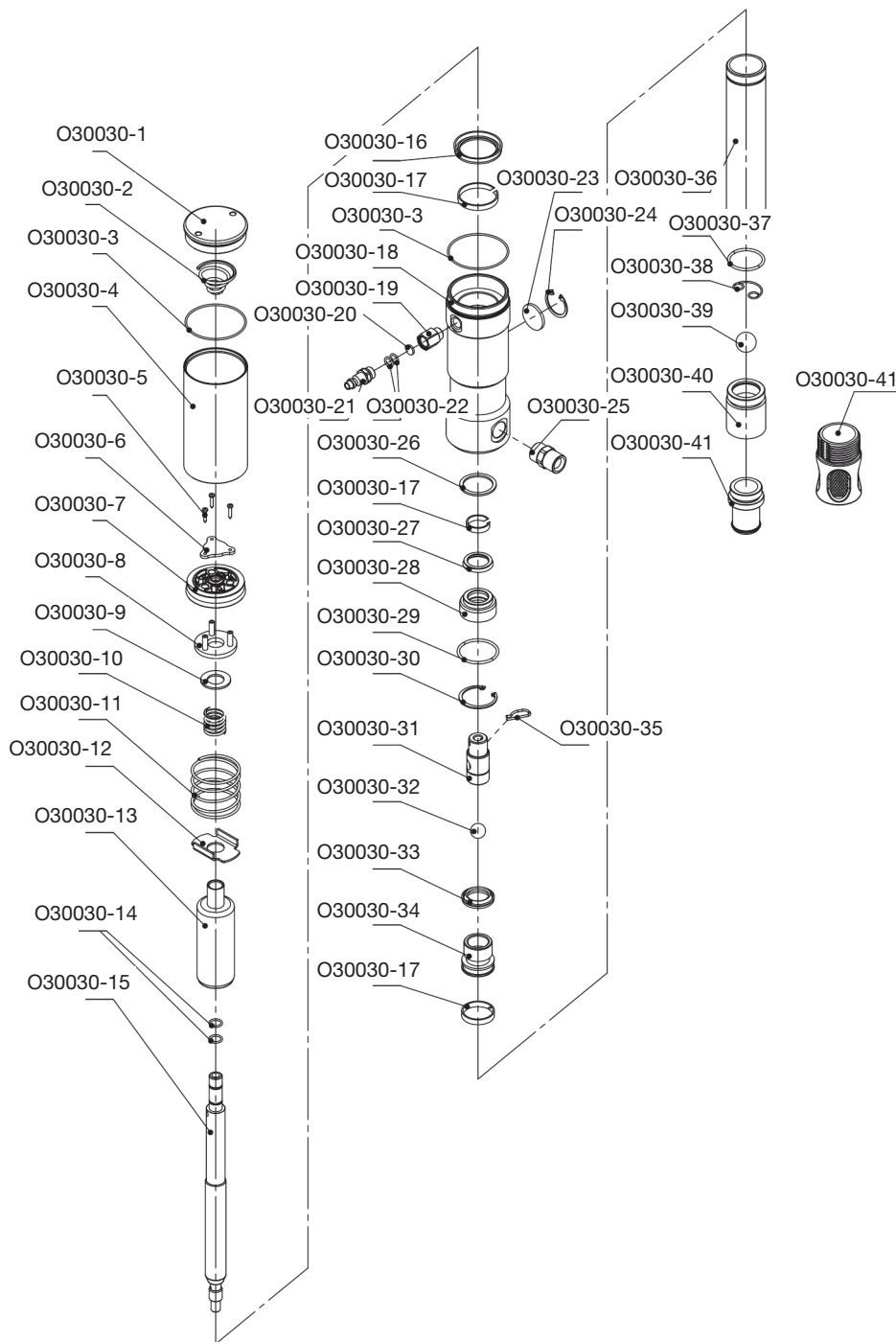
How to Use

Directly fit Pump into the Drum.

1. Insert the suction tube of pump into the drum and secure with bung adaptor, suitable for commercial drums with 57 diameter hole and threading 2" BSP.
2. Using suitable pipe fittings connect the oil control valve to the oil delivery hose.
3. Air inlet connection is 1/4" quick plug.
4. A pressure regulator to keep the pump's working pressure at the best possible level (maximum 5-10 bar) between the pump and the compressed air line can be installed.
5. A cut-off switch can enable the operator to stop the pump at any given moment by cutting the air supply off between the pump and the compressed air line.

Ordering Spare Parts

Parts List – Part No. O30030



Note: The Part Numbers with “*” are included in repair kit O30030-RK

Part Number	Description	Qty
O30030-1	Air Motor Cover	1
O30030-2	Spring	1
O30030-3*	O-Ring	2
O30030-4	Air Motor Shell	1
O30030-5	Screw	3
O30030-6	Plate	1
O30030-7*	Piston	1
O30030-8	Plate	1
O30030-9	Gasket	1
O30030-10	Spring	1
O30030-11	Spring	1
O30030-12	Back Plate	1
O30030-13	Barrel	1
O30030-14*	O-Ring	2
O30030-15	Pole	1
O30030-16*	Seal	1
O30030-17	Guiding	1
O30030-18	Air Control Center	1
O30030-19	Joint	1
O30030-20*	Silencer	1
O30030-21	Joint	1
O30030-22*	O-Ring	2
O30030-23	Silencer	1
O30030-24	Spring Circlip	1
O30030-25	Joint	1
O30030-26	Washer	1
O30030-27*	O-Ring	2
O30030-28	Seal	1
O30030-29	O-Ring	1
O30030-30	Spring Circlip	1
O30030-31	Screw	1
O30030-32	Washer	1
O30030-33*	Piston	1
O30030-34	Seal	1
O30030-35	Nut	1
O30030-36	Tube	1
O30030-37	O-Ring	1
O30030-38	Spring Circlip	1
O30030-39	Ball	1
O30030-40	Valve Seat	1
O30030-41	Filter or Connector	1

NSW/ACT
TEL: (02) 9939 0711
FAX: (02) 9939 0411

QLD/PNG
TEL: (07) 3889 8480
FAX: (07) 3889 8490

VIC/TAS
TEL: (03) 8787 8288
FAX: (03) 8787 8266

WA
TEL: (08) 9209 3066
FAX: (08) 9209 3933

SA/NT
TEL: (08) 8241 7111
FAX: (08) 8241 7011

NZ
TEL: (09) 447 1007
FAX: (09) 447 1008