

#### Description

Model 670AN2 is a heavy duty 14.4V battery operated cordless grease gun suitable for 450gm grease cartridges or bulk grease. Complete with its own convenient carry case, the 670AN2 also comes with 2 batteries, 1 hour fast charger, shoulder carry strap, a 90cm long high pressure flexible extension & hydraulic coupler. From Alemite USA, the 670AN2 can dispense up to 15 x 450gm cartridges before recharging the NiCd battery. (585-D1 400gm model also available).

#### Specifications

Uses:	14 volt Battery Operated Cordless Grease Gun - 450gm grease cartridge or bulk grease fill. Suitable for most greases up to NLGI2.
Flow Rate:	High torque motor with a continuous flow rate of up to 160 grams per minute (@ 1,000psi back pressure)
Grease Pressure:	Develops up to 10,000psi.
Delivery:	Dispenses up to 15 x 450gm cartridges of grease (4kg) (@ 1,000psi back pressure)
Weight:	Lightweight at 3.2kg (empty). Ergonomic design for balance in hand.
Power:	High capacity NiCd 14.4V/1900mAh battery. 1 Hour charge time. Thermal protector for optimal motor cooling.
Materials:	Glass fibre reinforced nylon body housing for super strength and impact resistance. Aluminium die cast gear housing

#### Loading and Priming the gun

Note: Refer to the spare parts diagram for component identification on the following procedures.

##### Cartridge Loading

1. Unscrew grease cylinder (36) from the gun.
2. Pull the follower rod and engage the groove in the follower rod with the slot in the grease cylinder cap.
3. Remove the plastic cap from the cartridge.
4. Apply a film of grease to the exposed inside surface of the cartridge.  
Note: This is only necessary for a virgin gun.
5. Insert the cartridge into the grease cylinder  
– (Remove the tabbed seal from the cartridge).
6. Screw the grease cylinder onto the gun.
7. Disengage the follower rod from the slot in the grease cylinder cap  
– (Push the follower rod into the grease cylinder).

##### Suction Loading

1. Unscrew grease cylinder (36) from gun.
2. Insert the head of the grease cylinder below the surface of the grease.
3. Slowly pull the follower rod outward from the grease cylinder cap until the groove is visible.
4. Engage the groove in the follower rod with the slot in the grease cylinder cap.
5. Screw the grease cylinder onto the gun.
6. Disengage the follower rod from the slot in the grease cylinder cap  
– (Push the follower rod into the grease cylinder).

##### Loader Pump

The Loader fitting on the gun must mate with the loader coupler. The pump may not operate if the components are not compatible.

1. Pull the follower rod & engage follower by rotating the rod.
2. Seat the loader fitting into the loader coupler – (Push down to hold the coupler valve open).
3. Operate the pump & view the movement of the follower rod.
4. Discontinue pump operation once the groove on the follower rod is visible.
5. Disengage follower rod from follower and push into the grease cylinder.

##### Priming the gun

In most cases the gun will prime supply by operating the trigger several times. Should the grease fail to appear, air must be bled.



## Force Prime

This process manually assists air within the gun to be bled at the Bleed Valve.

1. Put the follower rod & engage follower by rotating the rod.
2. Depress Bleed Valve (48) and at the same time push on the follower rod. Once the air is eliminated, operate the gun several times. Once grease appears, disengage the follower rod from the follower and push into the grease cylinder.

## Gun Operation

Battery pack (37) is intentionally shipped with a low charge.

Charge battery pack prior to use. Refer to the following section for details.

## Important To Note

The battery pack must be discharged and recharged several times before achieving a full charge.

Air pockets in the grease can cause the gun to lose prime. Check for prime after each refill and before lubrication.

The gun is equipped with a thermal protector to prevent the motor from overheating. When a blocked bearing, line, or grease fitting causes the gun to stall, the thermal protector will stop and restart the motor every 2-3 seconds. For maximum motor life, avoid operating at stall.

## Check Valve Contamination

Should the gun fail, the outlet check may be held open. Remove plug (41), clean Ball (44) & the ball seat of head (16).

## Battery Pack and Charger Safety Rules

This manual contains safety and operating instructions for Battery Pack part number 340912 and Battery charger 340914.

## Warning

Before using the Battery Charger read all instructions and cautionary markings on Battery Charger (55), Battery Pack (37) and products using the Battery Pack.

To reduce the risk of injury, charge only Nickel Cadmium type rechargeable batteries. Other types of batteries may burst causing injury.

An extension cord should not be used unless absolutely necessary. Use of an improper extension cord could result in a risk of fire and electric shock. If an extension cord must be used, make sure it is 16 gauge. Check to ensure that the pins on the plug of the extension cord are the same number, size, and shape as those of the plug on the Charger. Make sure that the extension cord is properly stored and in good electrical condition.

Do not incinerate the Battery Pack, even if it is severely damaged or completely worn out. The Battery Pack may explode in fire.

Do not expose the Charger to rain, snow or frost.

To reduce the risk of damage to electric plug and cord, pull by the plug rather than the cord when disconnecting the Charger.

Make sure the cord is located so that it will not be stepped on, tripped over, or otherwise subjected to damage or stress.

Do not operate the Charger with damaged cord or plug. Replace immediately.

Do not operate the Charger if it has received a sharp blow, been dropped, or otherwise damaged in any way.

Do not disassemble the Charger.

Do not charge the Battery Pack when the temperature is below 10°C (50°F) or above 35°C (95°F).

The Charger is designed to operate on standard household electrical power. Do not attempt to use it on any other voltage.

Consecutive charging may cause overheating. If you need to recharge the Battery packs consecutively, wait for about 15 minutes to allow the Charger to cool.

Do not insert foreign material into the hole for the Battery Pack in the Charger stand.

Do not disassemble the Battery Pack.

Do not store the gun and battery pack assembly in locations where the temperature may reach or exceed 40°C (104°F).

Do not short circuit the Battery Pack.

Do not discharge the Battery Pack beyond normal use limits. Further discharging (such as placing a rubber band on the trigger) can cause a deep discharge which may result in the polarity reversal of a cell rendering the Battery Pack useless.

Do not place the Charger in an area of extreme heat or cold. It works best at normal room temperature.

The Battery Pack contains rechargeable nickel-cadmium batteries. These batteries must be recycled or disposed of properly. Drop off expended Battery Pack at your local replacement battery retailer or your local recycling center.

## Battery Charger Operation

Charge the Battery Pack only with the Charger provided.

## Recharging the Hot Battery Pack

When using the gun continuously, the Battery Pack will become hot. Allow the Battery Pack to cool for approximately 30 minutes before attempting to recharge.

### NSW

TEL: (02) 9939 0711  
FAX: (02) 9939 0411

### QLD/PNG

TEL: (07) 3889 8480  
FAX: (07) 3889 8490

### VIC/TAS

TEL: (03) 8787 8288  
FAX: (03) 8787 8266

### WA

TEL: (08) 9209 3066  
FAX: (08) 9209 3933

### SA/NT

TEL: (08) 8241 7111  
FAX: (08) 8241 7011

### NZ

TEL: (09) 447 1007  
FAX: (09) 447 1008

When the Battery Pack becomes discharged and is hot, the green lamp on the Charger glows continuously. The green lamp indicates slow charging mode.

**Recharging Normal Battery Pack**

Charge the battery only with the charger provided.  
Make sure that the power circuit is the same as that shown on the charger specifications plate. Press down to ensure that the battery properly engages with the charger’s contacts.

**Function of Red and Green Lights**

- RED AND GREEN LIGHTS ALTERNATE FLASHING  
Once the charger is powered on, the Read and Green Lights flash alternately for 2 times
- BOTH LIGHTS OFF  
No battery
- RED LIGHT ON  
Battery charging
- GREEN LIGHT ON  
Battery fully charged
- RED LIGHT FLASHES  
Battery overheating

An overheated battery\* in the charger may cause a flashing red light. To restore the charging, the battery pack needs to be taken out of the charger for an approximate 30 minute cool down period prior to the next charging.

\*The battery overheating can be attributed to a reason below:

- A. Long continuous running
- B. Hot ambient temperature
- C. One or more cells are damaged

After normal usage, 1 hour of charge time is required to be fully charged. A minimum charge time of 1 to 1-1/2 hours is required to recharge a completely discharged battery.

The battery will become slightly warm to the touch while charging. This is normal and does not indicate a problem.

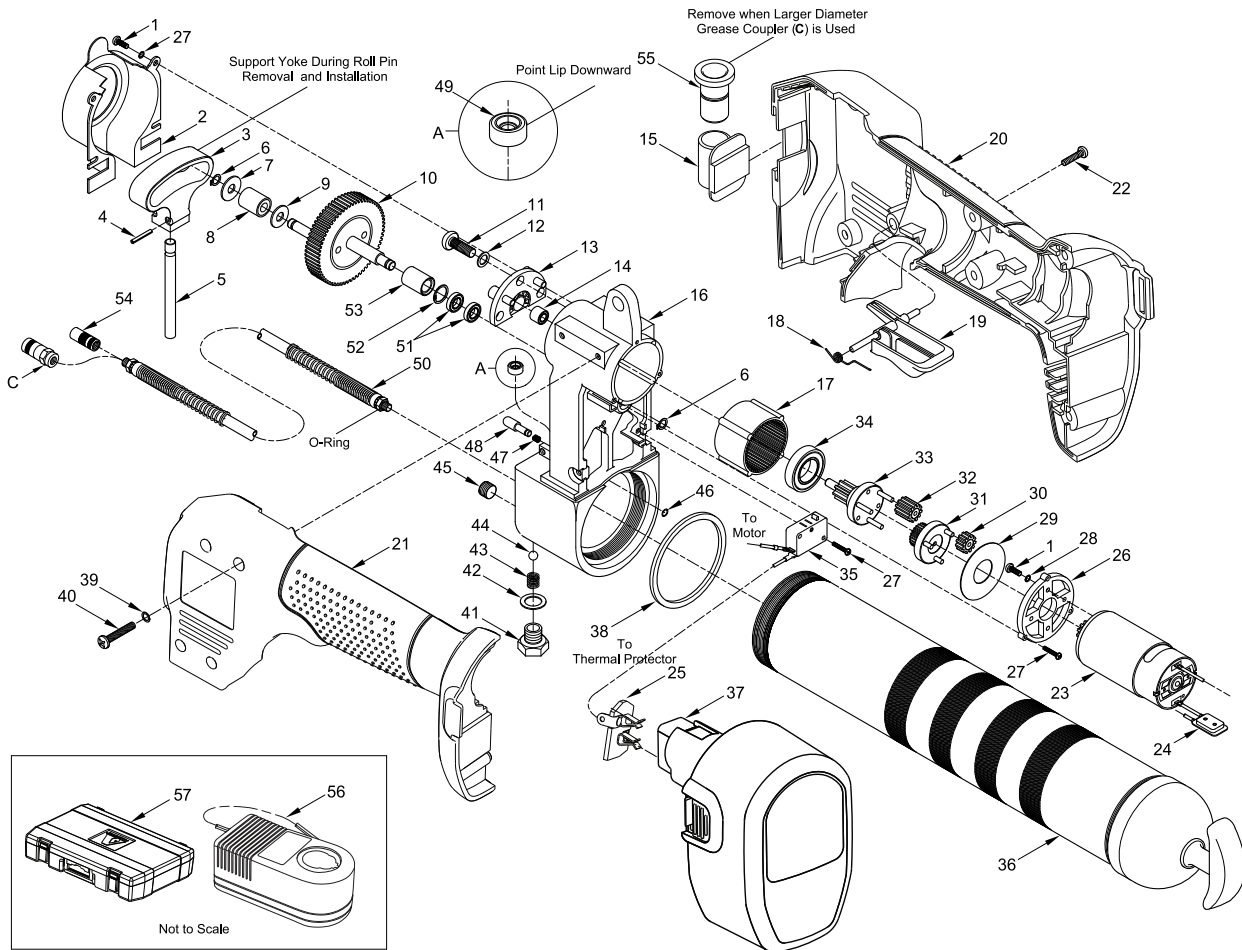
**Warranty**

Your 670AN2 battery operated cordless grease gun is covered by a 12 month manufacturer’s warranty from date of purchase. If you require any repair or service work please call us on any of the telephone numbers listed below or visit our website for more information.

We hope you enjoy hours and years of trouble free greasing with your new 670AN2 from Alemlube P/L.

NSW TEL: (02) 9939 0711 FAX: (02) 9939 0411	QLD/PNG TEL: (07) 3889 8480 FAX: (07) 3889 8490	VIC/TAS TEL: (03) 8787 8288 FAX: (03) 8787 8266	WA TEL: (08) 9209 3066 FAX: (08) 9209 3933	SA/NT TEL: (08) 8241 7111 FAX: (08) 8241 7011	NZ TEL: (09) 447 1007 FAX: (09) 447 1008
---	---	---	--	---	--

# Parts and Drawing Breakdown For 670AN2



## Ordering Spare Parts

### Parts List – Part No. 670AN2

Item No.	Part Number	Description	393795-6 Ball Check	393757 Bleed Valve	340338 Relief Valve	393795-12 Head	Qty
1		Screw, M3 x 6					6
2		Cover, Head					1
3		Yoke					1
4		Pin, Roll				•	2
5		Piston				•	1
6		Ring, Retaining				•	2
7		Washer, 0.24" ID x 0.67" OD					1
8		Bearing, Roller					1
9		Washer 0.24" ID x 0.59" OD					1
10		Gear Assembly, Output					1
11		Screw, M5 x 15				•	3
12		Washer, Lock				•	3
13		Holder, Assembly, Bearing				•	1
14		Bearing Needle				•	1
15		Holder					1
16		Head				•	1
17		Gear, Internal					1

NSW  
TEL: (02) 9939 0711  
FAX: (02) 9939 0411

QLD/PNG  
TEL: (07) 3889 8480  
FAX: (07) 3889 8490

VIC/TAS  
TEL: (03) 8787 8288  
FAX: (03) 8787 8266

WA  
TEL: (08) 9209 3066  
FAX: (08) 9209 3933

SA/NT  
TEL: (08) 8241 7111  
FAX: (08) 8241 7011

NZ  
TEL: (09) 447 1007  
FAX: (09) 447 1008

18		Spring, Trigger					1
19		Trigger					1
20		Cover, Housing Right					1
21		Cover, Housing Left					1
22		Screw					4
23	393756-17	Motor Assembly (+ Sun gear)					1
24		Protector Thermal					1
25		Contact Assembly, Battery					1
26	393756-15	Mount, Motor					1
27		Screw, M3 x 16					5
28		Washer, kcoL					6
29		Washer					1
30		Gear, Planet (1st stage)					3
31		Gear, Sun (2nd stage)					1
32		Gear, Planet (2nd stage)					3
33		Gear, Output Pinion					1
34		Bearing, Ball				•	1
35	393795-5	Switch					1
36	339820	Cylinder Assembly, Grease					1
37	340912	Battery Pack, 14.4V					1
38	336523	Gasket					1
39		Washer, Lock					8
40		Screw					8
41		Plug, Check	•				1
42		Gasket (Copper)	•			•	1
43		Spring, Check	•				1
44		Ball, Check 3/8" Diameter	•				1
45		Plug					1
46		O-Ring		•			1
47		Spring, Bleed Valve		•			1
48		Valve, Bleed		•			1
49		Seal, Piston				•	1
50	340067	Hose Assembly, Grease					1
51		Bearing, Ball				•	2
52		Ring, Internal Retaining				•	1
53		Bearing, Needle				•	1
54	308730	Coupler, Grease					1
55		Insert, Coupler (Rubber)					1
56	340914	Charger Assembly, Battery (230 Vac / 50 Hz)					1
57		Case, Carrying					1
OPTIONAL							
C	6304-B	Coupler, Grease					1

\* Not all items are available for sale as individual spare parts. Some items only available as part of kit. Please enquire as required.

NSW

TEL: (02) 9939 0711  
FAX: (02) 9939 0411

QLD/PNG

TEL: (07) 3889 8480  
FAX: (07) 3889 8490

VIC/TAS

TEL: (03) 8787 8288  
FAX: (03) 8787 8266

WA

TEL: (08) 9209 3066  
FAX: (08) 9209 3933

SA/NT

TEL: (08) 8241 7111  
FAX: (08) 8241 7011

NZ

TEL: (09) 447 1007  
FAX: (09) 447 1008