

Description

The 30080 is a portable drain designed to safely capture the oil from engine crankcases, transmissions, and differentials, and be emptied with the use of air pressure. The oil level gauge located on the side of the reservoir indicates the quantity of oils drained. While draining to avoid closing the bleeder vent on the catch-basin to reservoir connecting tube, Never lift the catch-basin to its upper limit. Leave 4-5cm.

Specifications

Uses	Transfers and captures waste oil from crankcases, transmissions and differentials
Tank Capacity	Holding tank capacity of 80L

Assembly Instructions

- 1 Attach the collection bowl (#003) to the swivel connector (#006) and tighten nut (#007) with wrench.
- 2 Put the strainer (#002) and extension funnel (#001) on the collection bowl.

Emptying The Reservoir

- 1 Close the ball valve (#008). Attach the end of the drain hose to a suitable waste oil container. Connect (0.5Bar) shop air to quick plug (#020) and open the ball valve (#019) and open ball valve (#021).
- 2 After the fluids have been transferred from the unit's reservoir tank close ball valve (#021).
- 3 The unit is equipped with a pneumatic safety relief valve that has been factory calibrated at 1 bar (14 PSI).

Operating Instructions

Loosen rotated handle (#17), to raise and lower the extension tube (#009) by lift handle bar (#013), and hard tighten after reaching desired height.

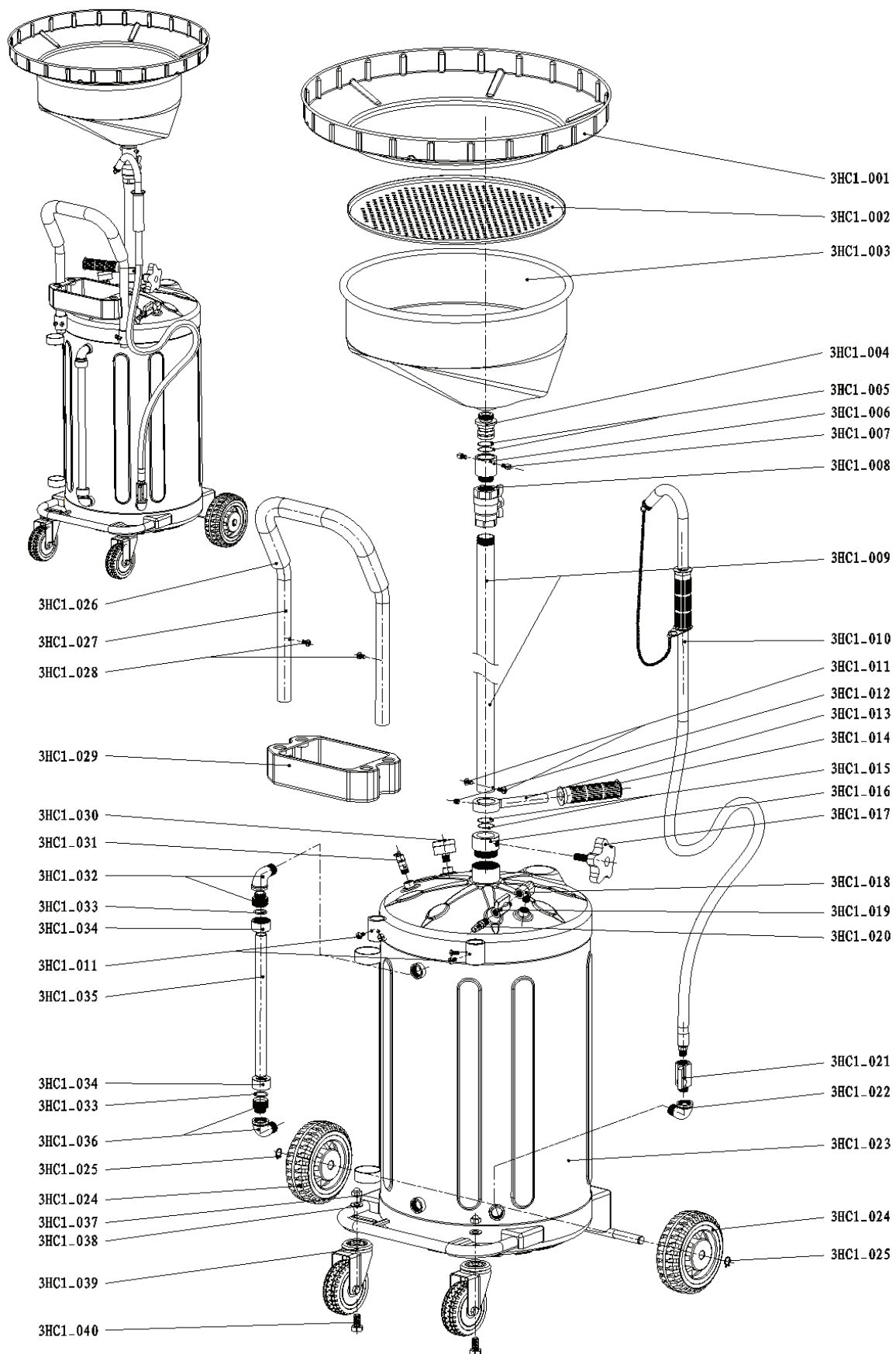
**CAUTION: Never fill the reservoir over the maximum level indicated by the lever gauge (#035) that is located on the side of the reservoir.*

Warning

- Do not drain caustic or flammable products.
 - Do not expose the reservoir to any source of heat.
 - Do not do any welding on the reservoir.
- 1 While draining high temperature oils, keep hands and face protected.
 - 2 Only use the device for the purpose for which it has been designed.
 - 3 Do not modify any component of the equipment; only use original spare parts.
 - 4 Our technical office is at your full disposal for any information you may need.



Parts and Drawing Breakdown For The 30080



NSW
TEL: (02) 9677 1555
FAX: (02) 9675 1155

QLD/PNG
TEL: (07) 3204 9166
FAX: (07) 3204 1224

VIC/TAS
TEL: (03) 8787 8288
FAX: (03) 8787 8266

WA
TEL: (08) 9302 4199
FAX: (08) 9302 2095

SA/NT
TEL: (08) 8241 7111
FAX: (08) 8241 7011

NZ
TEL: (09) 447 1007
FAX: (09) 447 1008

Ordering Spare Parts

Parts List – Part No. 30080

Item	Description	Quantity	Item	Description	Quantity
3HC1_001	extension funnel	1	3HC1_021	ball valve	1
3HC1_002	strainer	1	3HC1_022	adapter	1
3HC1_003	collection bowl	1	3HC1_023	tank	1
3HC1_004	swivel connect	1	3HC1_024	wheel	2
3HC1_005	o-ring	2	3HC1_025	clamp	2
3HC1_006	swivel connect	1	3HC1_026	handle sleeve	1
3HC1_007	nut	2	3HC1_027	handle	1
3HC1_008	ball valve	1	3HC1_028	screw	2
3HC1_009	extension tube	1	3HC1_029	tool tray	1
3HC1_010	draining hose	1	3HC1_030	gauge	1
3HC1_011	screw	6	3HC1_031	safety valve	1
3HC1_012	screw	1	3HC1_032	level gauge adapter 1	1
3HC1_013	lift handle bar	1	3HC1_033	o-ring	2
3HC1_014	handle sleeve	1	3HC1_034	screw	2
3HC1_015	o-ring	2	3HC1_035	level gauge	1
3HC1_016	joint	1	3HC1_036	level gauge adapter 1	1
3HC1_017	rotated handle	1	3HC1_037	nut	2
3HC1_018	right angle adapter	1	3HC1_038	washer	2
3HC1_019	ball valve	1	3HC1_039	castor	2
3HC1_020	quick plug	1	3HC1_040	threaded rod	2

NSW
TEL: (02) 9677 1555
FAX: (02) 9675 1155

QLD/PNG
TEL: (07) 3204 9166
FAX: (07) 3204 1224

VIC/TAS
TEL: (03) 8787 8288
FAX: (03) 8787 8266

WA
TEL: (08) 9302 4199
FAX: (08) 9302 2095

SA/NT
TEL: (08) 8241 7111
FAX: (08) 8241 7011

NZ
TEL: (09) 447 1007
FAX: (09) 447 1008