

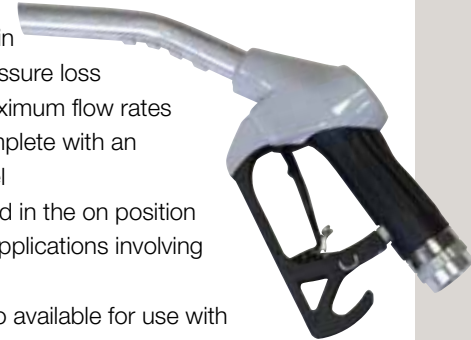
**F20010
12V Diesel Fuel Drum Pump**

- ▲ Flow rates of up to 30 L/min
- ▲ Innovative vertically installed centrifugal pump
- ▲ Double insulated motor body
- ▲ In built on/off switch
- ▲ Equipped with a 12V DC motor and supplied with suction and delivery hoses, a manual nozzle, 3m of battery cable with clamps and an inlet filter
- ▲ Compact, portable, versatile and weighs only 4.5kg



**F20030
Automatic Shut Off Fuel Nozzle**

- ▲ Compact, lightweight and easy to use
- ▲ Flow rates of up to 80 L/min
- ▲ Minimum pressure loss facilitates maximum flow rates
- ▲ Supplied complete with an integral swivel
- ▲ Can be locked in the on position
- ▲ Suitable for applications involving a pump only
- ▲ F20030U also available for use with unleaded fuel



**F20050
Rotary Drum Pump**

- ▲ Aluminium alloy body & long lasting neoprene seal
- ▲ Flow rates of up to 28 L/min
- ▲ Suitable for transferring petrol, diesel, kerosene, oil and hydraulic fluid
- ▲ Suction distance of up to 1.5m, lift capability of 4.8m
- ▲ For use with 205L drums



**O30010
20L Gear Oil Drum Pump**

- ▲ Suitable for the transfer of engine, diff, gear and hydraulic oils
- ▲ Dispenses 70mL on the downstroke
- ▲ UV stabilised long life hose
- ▲ Features include a non drip nozzle, a drain back nozzle holster and quick connect bung adaptor
- ▲ Drainback nozzle holster to ensure that excess oil ends up back in the drum



**F20020
12V Refuelling Kit**

- ▲ Flow rates of up to 38 L/min
- ▲ Self priming rotary vane pump
- ▲ Suction capacity of up to 2m
- ▲ Duty cycle of 30 minutes on, 30 minutes off
- ▲ Equipped with a 12V DC motor and supplied with suction and delivery hoses, battery cable with clamps, inlet filter and a manual plastic nozzle
- ▲ Compact, completely portable, simple installation and easy to use



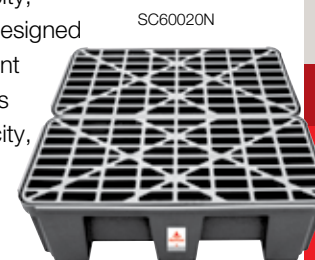
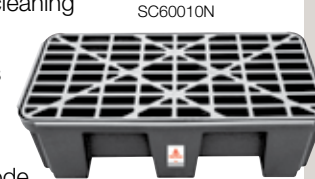
**F20040
Manual Fuel Nozzle**

- ▲ Strong aluminium construction
- ▲ Flow rates of up to 80 L/min
- ▲ Equipped with an integrated swivel connector
- ▲ Hammer-free valve facilitates efficient fuel delivery
- ▲ Suitable for use with any fuel transfer system including gravity applications
- ▲ Features include lever protection and a removable trigger lock



**SC60010N / SC60020N
2 & 4 Drum Spill Containers**

- ▲ Removable for ease of cleaning
- ▲ Compatible with most forklifts and pallet trucks
- ▲ Manufactured from high strength polyethylene that will not rust or corrode
- ▲ Helps to create an OH&S compliant workplace environment
- ▲ SC60010N (400L capacity, 1320 x 670 x 450mm) designed for static spill containment for up to 2 x 205L drums
- ▲ SC60020N (800L capacity, 1320 x 1340 x 450mm) designed for static spill containment for up to 4 x 205L drums



**W50010
Oil Suction Gun**

- ▲ Metal construction and 500mL capacity
- ▲ Ideal for the draining or topping up of gear boxes, differentials, transmissions and master brake cylinders
- ▲ Handles oils up to SAE 90
- ▲ 290mm long flexible extension
- ▲ Cup packing type seal
- ▲ Toughened powder coated finish and knurled non-slip barrel for ease of use



EL SERIES



Greasing Equipment
Fuel Transfer
Hose Reels
Oil Transfer
Spill Containment

EL SERIES

The Alemtube EL Series is a range of quality products at affordable prices. The EL Series assists with lubrication, fluid handling, workshop and spill containment needs in the mining, industrial, agricultural, automotive and transport market sectors.



Alemlube

Head Office
Phone: 02 9938 2999
Fax: 02 9938 6605

Western Australia
Phone: 08 9209 3066
Fax: 08 9209 3933

New South Wales
Phone: 02 9939 0711
Fax: 02 9939 0411

**South Australia/
Northern Territory**
Phone: 08 8241 7111
Fax: 08 8241 7011

Victoria/Tasmania
Phone: 03 8787 8288
Fax: 03 8787 8266

New Zealand
Phone: 64 9 447 1007
Fax: 64 9 447 1008

Queensland/PNG
Phone: 07 3204 9166
Fax: 07 3204 1224

EL SERIES

G10010N 450g Trigger Action Grease Gun

- ▲ Develops grease pressures of up to 4,000psi
- ▲ 500g capacity when using bulk grease
- ▲ Three way loading
- ▲ Unique follower cup design makes the gun suitable for use with both 450g cartridges and bulk grease – without needing to change the orientation of the follower cup
- ▲ Includes a 300mm long grease gun flex and heavy duty four jaw coupler



G10030 450g Air Operated Grease Gun

- ▲ Develops grease pressures of up to 6,000psi
- ▲ Continuous grease flow ensures effortless greasing
- ▲ Three way loading
- ▲ Exclusive air piston design ensures consistent priming
- ▲ 450g cartridge capacity
- ▲ Includes a 300mm long grease gun flex and four jaw coupler



G10050N 85g Mini Pistol Grease Gun

- ▲ Develops grease pressures of up to 3,500psi
- ▲ Zinc die-cast head construction
- ▲ Suits bulk grease and 85g grease cartridges
- ▲ Two way loading
- ▲ Heavy duty four jaw coupler



HR40010 Air Hose Reel

- ▲ Supplied with 15m x fitted 10mm ID hose
- ▲ Impact resistant polypropylene construction
- ▲ Maximum working pressure of up to 300psi
- ▲ Automatic and positive latching mechanism
- ▲ 3/8" inlet & outlet connections
- ▲ Inclusive of an integral wall/ceiling mounting bracket and 0.9m lead in hose
- ▲ Ideal for use with drills, impact wrenches, angle grinders, ratchets & tyre gauges



G10020N 450g Lever Action Grease Gun

- ▲ Develops grease pressures of up to 8,000psi
- ▲ 500cc capacity when using bulk grease
- ▲ Three way loading
- ▲ Unique follower cup design makes the gun suitable for use with both 450g cartridges and bulk grease – without needing to change the orientation of the follower cup
- ▲ Includes a 150mm long grease rigid extension and heavy duty four jaw coupler



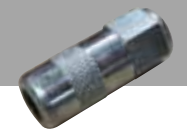
G10040 450g 18V Cordless Grease Gun

- ▲ Develops grease pressures of up to 10,000psi
- ▲ Delivery rates of up to 80 g/min
- ▲ Can be used with up to four 450g cartridges before recharging or battery changeover is required
- ▲ 75 minutes battery recharge time
- ▲ Includes a 106cm flexible extension
- ▲ Also available G10044 suits 400g cartridges



G10060N Coupler

- ▲ 4 jaw coupler for standard hydraulic grease nipples



G10070N 30cm Grease Gun Flex

- ▲ Industrial quality high flexibility grease gun flex



G10080N 40cm Grease Gun Flex

- ▲ Industrial quality high flexibility grease gun flex



HR40020 Air & Water Hose Reel

- ▲ Supplied with 15m x fitted 12mm ID hose
- ▲ Made from high quality impact resistant polypropylene
- ▲ Maximum working pressure of up to 300psi
- ▲ 1/2" inlet & outlet connections
- ▲ Automatic spring rewind retrieves, stores & protects air/water hose
- ▲ Inclusive of an integral wall/ceiling mounting bracket and 0.9m lead in hose
- ▲ Ideal for use with drills, impact wrenches, angle grinders, ratchets & tyre gauges



www.alemlube.com.au
www.alemlube.co.nz
info@alemlube.com.au

Specifications subject to change without prior notice
©2012 Alemlube Pty Ltd