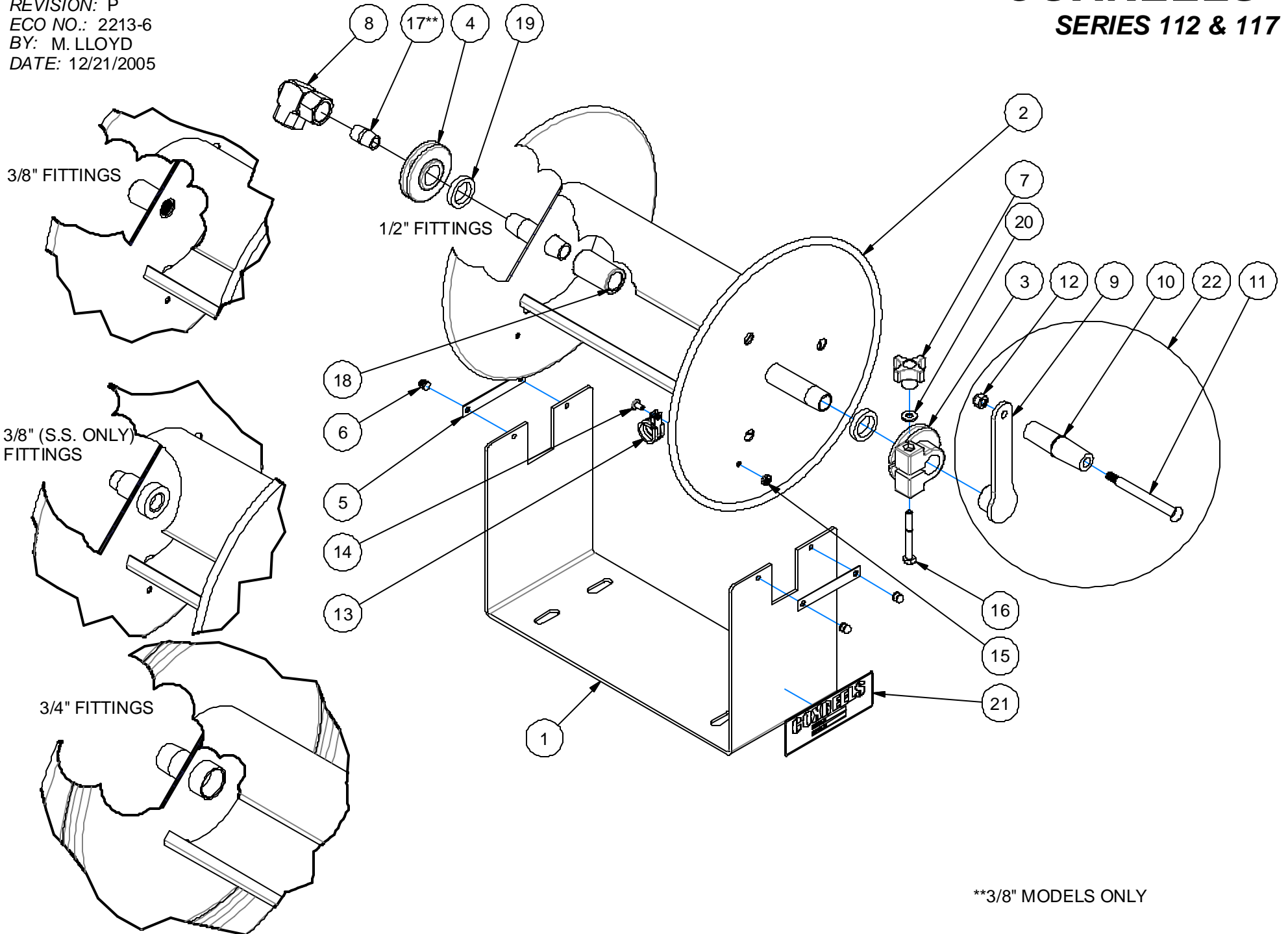


# EXP-40

REVISION: P  
ECO NO.: 2213-6  
BY: M. LLOYD  
DATE: 12/21/2005

# COXREELS

## SERIES 112 & 117



\*\*3/8" MODELS ONLY

COMMON PARTS TO ALL "U" FRAME CHALLENGER REELS

ASSY. ITEM NO.	DETAIL ITEM NO.	PART NO.	DESCRIPTION	112P-3-8	112-3-50	112-3-100	112-3-150	112-4-75	117-3-250	117-3-400	117-3-550	117-4-225	117-4-350	117-5-100	
	1	6304-1-4.5	FRAME, "U", CHALLENGER		1										
		6304-1-8	FRAME, "U", CHALLENGER	1		1									
		6304-1-12.5	FRAME, "U", CHALLENGER				1	1							
		6304-2-8	FRAME, "U", CHALLENGER							1					
		6304-2-12.5	FRAME, "U", CHALLENGER								1		1		1
	6304-2-18	FRAME, "U", CHALLENGER									1		1		
	2	7118-1-4.5	DRUM ASSY, 3/8" NPT, 5.5" X 4.5"W		1										
		7118-1-8	DRUM ASSY, 3/8" NPT, 5.5" X 8"W				1								
		7118-1-8-SPEC	DRUM ASSY, 3/8" NPT, 5.5" X 8"W (SS PLUMBING)	1											
		7118-1-12.5	DRUM ASSY, 3/8" NPT, 5.5" X 12.5"W					1							
		7118-2-8	DRUM ASSY, 3/8" NPT, 5.5" X 8"W							1					
		7118-2-12.5	DRUM ASSY, 3/8" NPT, 5.5" X 12.5"W								1				
		7118-2-18	DRUM ASSY, 3/8" NPT, 5.5" X 18"W									1			
		7108-1-12.5	DRUM ASSY, 1/2" NPT, 5.5" X 12.5"W						1						
		7108-2-12.5	DRUM ASSY, 1/2" NPT, 5.5" X 12.5"W										1		
		7108-2-18	DRUM ASSY, 1/2" NPT, 5.5" X 18"W											1	
	7108-5-12.5	DRUM ASSY, 3/4" NPT, 5.5" X 12.5"W												1	
	3	6329-1-1	BEARING, EPDM, .877" ID, CRANK SIDE	1	1	1	1	1	1	1	1	1	1	1	1
	4	6328-1-1	BEARING, EPDM, .877" ID, PLUMBING SIDE	1	1	1	1	1	1	1	1	1	1	1	
		6328-1-2	BEARING, EPDM, 1.058 ID, PLUMBING SIDE												1
	5	15711-1	PLATE, KEEPER, BEARING	2	2	2	2	2	2	2	2	2	2	2	2
	6	7105	RIVET, POP, ALUMINUM	4	4	4	4	4	4	4	4	4	4	4	4
	7	15719	KNOB, BLACK, PHENOLIC	1	1	1	1	1	1	1	1	1	1	1	1
	8	1935	SWIVEL, 3/8" NPT, CARBOXYLATED		1	1	1			1	1	1			
		433-FG-SS	SWIVEL, 3/8" NPT, NITRILE, FOOD GRADE, SS	1											
		439	SWIVEL, 1/2" NPT, CARBOXYLATED					1					1	1	
		426	SWIVEL, 3/4" NPT, CARBOXYLATED												1
22		7272-1	CRANK ARM ASSEMBLY	1	1	1	1	1	1	1	1	1	1	1	
	9	7107	CRANK ARM	1	1	1	1	1	1	1	1	1	1	1	
	10	6333	HANDLE, CRANK	1	1	1	1	1	1	1	1	1	1	1	
	11	1621	BOLT, SHOULDER, 5/16-18	1	1	1	1	1	1	1	1	1	1	1	
	12	111-1	NUT, LOCK, 5/16-18 (LOW PROFILE)	1	1	1	1	1	1	1	1	1	1	1	
	13	381	HOSE CLAMP, #10	1	1	1	1		1	1	1				
		383	HOSE CLAMP, #12					1				1	1		
		384	HOSE CLAMP, #18											1	
	14	245	SCREW, TRUSS HD, 10-32 X 3/8"	1	1	1	1	1	1	1	1	1	1	1	
	15	130	NUT, KEPS, 10-32	1	1	1	1	1	1	1	1	1	1	1	
	16	7146	BOLT, HEX, 1/4-20 X 2-1/4", GR 5	1	1	1	1	1	1	1	1	1	1	1	
	17	7115	NIPPLE, 3/8-18 X CLOSE, SCH 80	1	1	1	1		1	1	1				
	18	7116	AXLE, PLUMBING, 1/2-14 COUPLING					1*					1*	1*	
	19	7145	SPACER	2	2	2	2	2	2	2	2	2	2	1	
	20	688	WASHER, FLAT, 1/4" SAE	1	1	1	1	1	1	1	1	1	1	1	
	21	10925-5	NAMEPLATE, PRODUCT, STD DECAL	1	1	1	1	1	1	1	1	1	1	1	

\*SHOWN FOR REFERENCE. INCLUDED WITH DRUM ASSEMBLY.