



OWNER'S TECHNICAL

20kg Hand Operated Grease Reservoir Filler Kit

7667

October 2022

Description

The 7667 20kg Hand Operated Grease Reservoir Filler Kit is available for the quick and contaminant free transfer of grease from 20kg drums to lubrication pump grease reservoirs when compressed air is not available and is particularly suitable for filling pump grease reservoirs.

The 7667 is capable of delivering 1.0kg of grease every 13 strokes and developing pressures of up to 500psi (34 Bar).

Supplied standard with a drum cover, follower plate, quick connect high volume coupler and two metres of delivery hose, the 7667 is an ideal means of filling a variety of lube system pump grease reservoirs while at the same time protecting your system and valuable plant and equipment from foreign particle contamination.



Operation

To operate pump, proceed as follows:

1. Connect hydraulic coupler with lubricant hose assembly to fitting.

CAUTION: Do not point dispensing device at oneself or any other person; accidental discharge of pressure will result in serious injury.

2. Work lever up and down until fluid emits from hydraulic coupler and lubricates fitting.

Maintenance

Do the following periodically:

1. Check for sufficient lubricant in container.
2. Inspect lubricant hose and coupler assembly.
3. Wipe hydraulic coupler clean of any lubricant after every use.
4. Flush pump clean with appropriate solvent to dislodge any foreign material or excess lubricant.

NSW/ACT
TEL: (02) 9677 1555
FAX: (02) 9675 1155

QLD/PNG
TEL: (07) 3204 9166
FAX: (07) 3204 1224

VIC/TAS
TEL: (03) 8787 8288
FAX: (03) 8787 8266

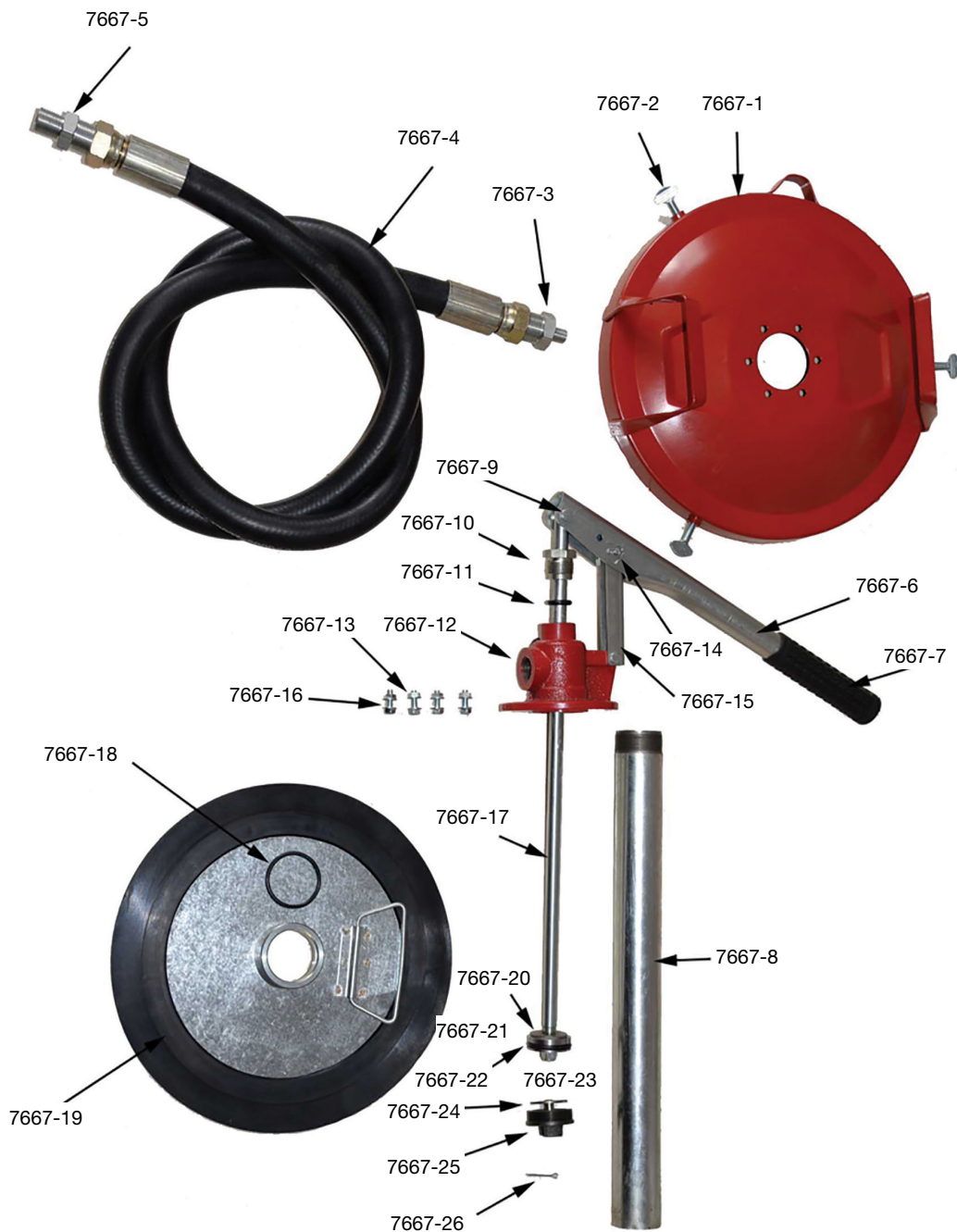
WA
TEL: (08) 9302 4199
FAX: (08) 9303 2095

SA/NT
TEL: (08) 8241 7111
FAX: (08) 8241 7011

NZ
TEL: (09) 447 1007
FAX: (09) 447 1008

Ordering Spare Parts

Parts List – Part No. 7667



Part No.	Description	Qty
7667-1	Cap	1
7667-2	Screw	1
7667-3	Adapter	1
7667-4	Rubber Hose	1
7667-5	Adapter	1
7667-6	Handle	1
7667-7	Handle Glove	1
7667-8	Tube	1
7667-9	Pin	1
7667-10	Fixed Nut	1
7667-11	O-Ring	1
7667-12	Body	1
7667-13	Nut	4
7667-14	Cotter	1
7667-15	Connecting Rod	1
7667-16	Screw	4
7667-17	Piston Rod	1
7667-18	O-Ring	1
7667-19	Oil Pressing Plate	1
7667-20	Plate	1
7667-21	O-Ring	1
7667-22	Piston	1
7667-23	Nut	1
7667-24	Bottom Valve Plate	1
7667-25	Bottom Valve	1
7667-26	Cotter	1

NSW/ACT

TEL: (02) 9677 1555
FAX: (02) 9675 1155

QLD/PNG

TEL: (07) 3204 9166
FAX: (07) 3204 1224

VIC/TAS

TEL: (03) 8787 8288
FAX: (03) 8787 8266

WA

TEL: (08) 9302 4199
FAX: (08) 9303 2095

SA/NT

TEL: (08) 8241 7111
FAX: (08) 8241 7011

NZ

TEL: (09) 447 1007
FAX: (09) 447 1008